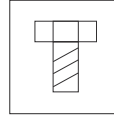
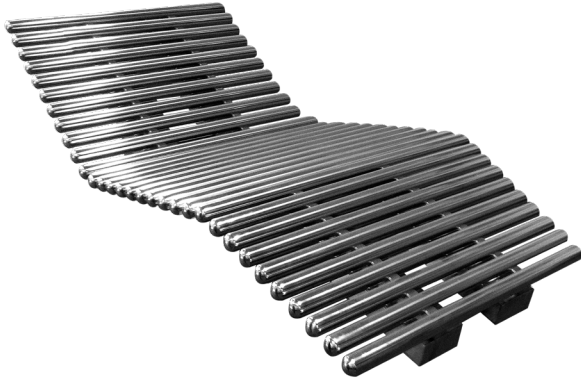
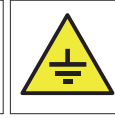


REF. 120.3L

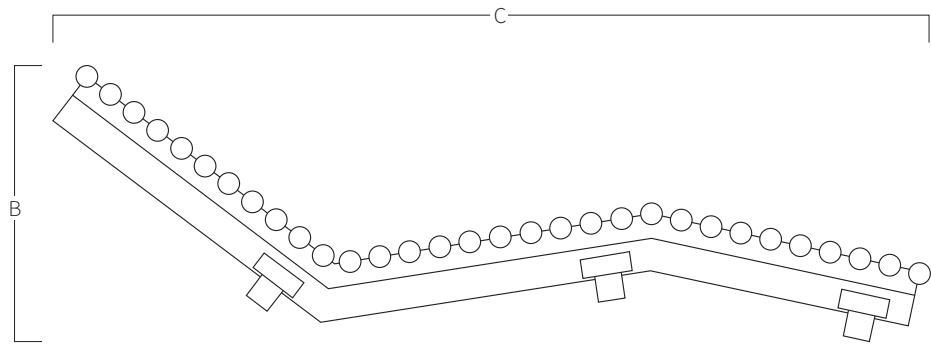
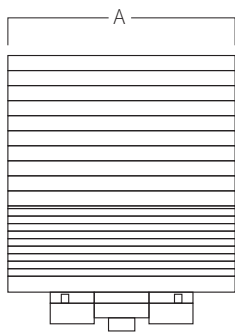
Hydromassage liner lounger in stainless steel AISI 316L (Marine quality). Polished finish. 1 gasket included.



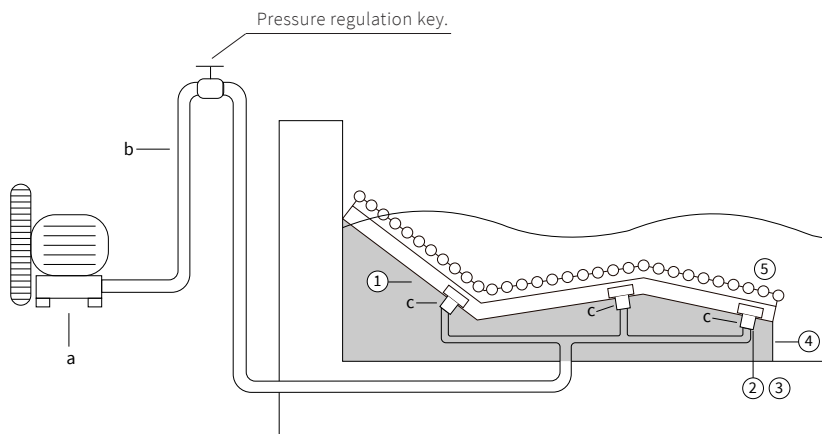
Screws
Included



Earth
Connection



A	B	C
625	470	1685
24,61	18,50	66,34
Measure in mm Mesure in inch		



MOUNTING SYSTEM

- 1) Disassembly the tubular structure of the base (10 screws allen M8).
- 2) Connect the three 1 1/2" female fitting to the air intake.
- 3) Fix the earth connection.
- 4) Embed the main structure to the wall designed to be that, place the gasket and fix the registrable cover.
- 5) Reassembling the tubular structure above the main structure.

a) Blower pump:

120L.3 - 1,1kw - 210m³/h (Ref. AQA-S1100-210).

b) Tube Ø75mm.

c) Connection 1 1/2" female fitting.

*Pneumatic or electric button to be defined in work.

